

## **Bale loosening drum 6000 x 3000 mm, for breaking up and loosening materials pressed into bales**



This is a 6000 x 3000 mm bale loosening drum for breaking up and loosening materials pressed into bales.

### **Technical data for the bale loosening drum:**

Manufacturer not known

Type of bale loosening drum

Year of manufacture not known

Dimensions of the drum 6000 x 3000 mm (l x d)

Height of the welded-in helix 300 mm

Dimensions of the drum frame 4900 x 3400 x 2200 mm (L x W x H)

Drive power 2 x 4 kW

### **Functional description:**

The bale loosening drum was fed with pressed paper bales from which the binding wire had previously been removed. The pressed and compact bale is broken up and loosened by the baffle plates welded into the drum parallel to the conveying direction. The helix, which is welded in with an incline to the conveying direction, transports the loosened material further to the drum outlet.

Here it falls through a hopper onto a conveyor belt for further processing.

### **Scope of delivery:**

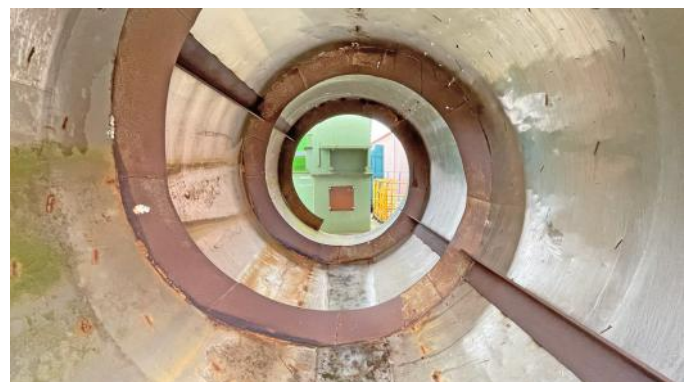
Bale loosening drum

Frame with drive and roller bearings for the bale loosening drum

### **Comments:**

Documentation (operating instructions, CE declaration, electrical/hydrical circuit diagram) is not available and cannot be supplied. Viewing is possible by appointment. We accept no liability for the technical details or any errors.

**Bale loosening drum 6000 x 3000 mm, for breaking up and loosening materials pressed into bales**





**Bale loosening drum 6000 x 3000 mm, for breaking up and loosening materials pressed into bales**



**Bale loosening drum 6000 x 3000 mm, for breaking up and loosening materials pressed into bales**

