

**Baler Bollegraaf, type HBC 60 A, 60 t pressing force, yoc 2000, operating hours 32,169 h, drive power 45 kW, with chain belt conveyt and wire stations**



**For sale is a complete baling system consisting of conveyor technology, baling press, bale chute and wire stations.**

**For sale is a complete baling system consisting of conveyor technology, baling press and wire stations.**

**Technical data baler:**

Manufacturer Bollegraaf Recycling Machinery B.V.

Typ HBC 60A

Year of construction 2000

Hours of operation 32,169 hours, stand November 2024

Press power main press 60 tons

Press power of pre-press max. 25 tons

Feed channel 1,320 x 1,100 mm

Theoretic cycle time 18 sec.

Bale size 1,100 x 720 mm, lenght variable

Driving motor 45 kW

Connected load 60 kW

Tying system 5-fold vertical

Throughput rate at a

bulk weight of 30 kg/cbm approx. 5,5 tons/hour

bulk weight of 50 kg/cbm approx. 10 tons/hour

bulk weight of 100 kg/cbm approx. 16 tons/hour

Bale weight 400 up to 750 kg, depends on material

SPS controller Telemecanique TSX Micro

Machine weight baler approx. 24 tons

**Scope of delivery:**

1 piece chain belt conveyor

1 Bollegraaf HBC 60A baler with whirling unit

1 maintenance platform with access ladder

**Baler Bollegraaf, type HBC 60 A, 60 t pressing force, yoc 2000, operating hours 32,169 h, drive power 45 kW, with chain belt conveyt and wire stations**

2 wire stations with deflection rollers for 10 wire reel stands (without wire)

**The following repair and overhaul work was carried out:**

Hydraulic oil tank emptied, cleaned and refilled with new oil

Oil filter and air filter replaced

Hydraulic block partially resealed

Hydraulic hose on hydraulic block replaced

Wire entry marks on the floor passages welded shut and smoothed

Tying unit cleaned, serviced

Electrical system repaired, door flap contact switch partially replaced

Whirbulator repaired

General maintenance work carried out, lubricated

Machine tested during operation, without the use of materials, in manual mode and in automatic mode, see function video

**Comments:**

The system has already been completely dismantled, stored and is available for loading at short notice. The documentation (BA, CE, electrical/hydraulic circuit diagram) is available. Viewing is possible by appointment. We accept no liability for the technical details or any errors.

**Baler Bollegraaf, type HBC 60 A, 60 t pressing force, yoc 2000, operating hours 32,169 h, drive power 45 kW, with chain belt conveyt and wire stations**





**Baler Bollegraaf, type HBC 60 A, 60 t pressing force, yoc 2000, operating hours 32,169 h, drive power 45 kW, with chain belt conveyt and wire stations**





**Baler Bollegraaf, type HBC 60 A, 60 t pressing force, yoc 2000, operating hours 32,169 h, drive power 45 kW, with chain belt conveyt and wire stations**



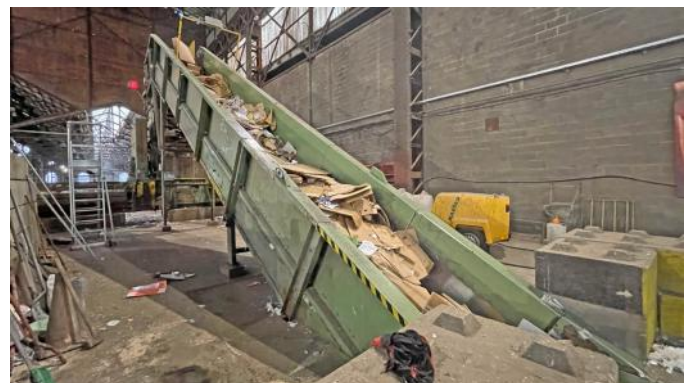


**Baler Bollegraaf, type HBC 60 A, 60 t pressing force, yoc 2000, operating hours 32,169 h, drive power 45 kW, with chain belt conveyt and wire stations**





**Baler Bollegraaf, type HBC 60 A, 60 t pressing force, yoc 2000, operating hours 32,169 h, drive power 45 kW, with chain belt conveyt and wire stations**

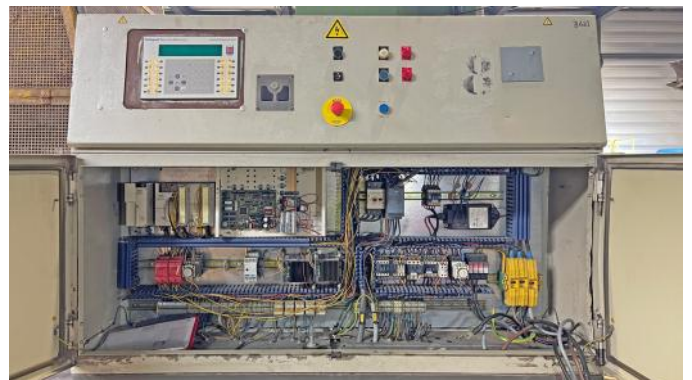
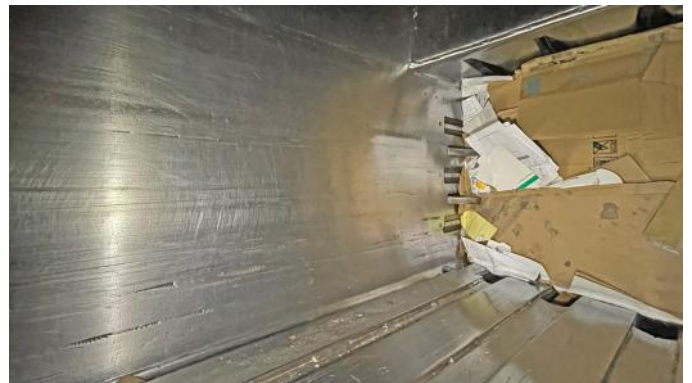
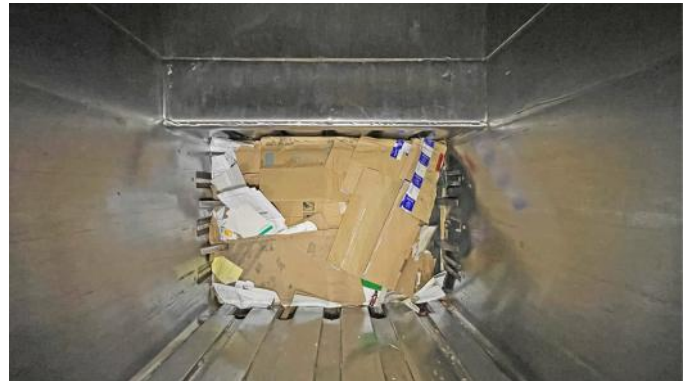


**Baler Bollegraaf, type HBC 60 A, 60 t pressing force, yoc 2000, operating hours 32,169 h, drive power 45 kW, with chain belt conveyt and wire stations**





**Baler Bollegraaf, type HBC 60 A, 60 t pressing force, yoc 2000, operating hours 32,169 h, drive power 45 kW, with chain belt conveyt and wire stations**



**Baler Bollegraaf, type HBC 60 A, 60 t pressing force, yoc 2000, operating hours 32,169 h, drive power 45 kW, with chain belt conveyt and wire stations**

