

Baler HSM, type VK 8818 R-FU, 100 t pressing force, yoc 2015, only 19,750 operating hours, drive 2 x 45 kW (frequency-controlled), with complete conveyor technology



The entire baling system (baler and conveyor belt) is in good, operational condition and is cleaned, lubricated and maintained by the operator on a weekly basis in accordance with the manufacturer's specifications. The conveyor belt, the transverse distribution belt and the baling press are for sale, with bale chute but without wire pulling stations and without wire.

Technical data baler:

Manufacturer HSM GmbH + Co. KG, Germany

Type VK 8818 R-FU

Year of construction 2015

Operating hours 19,750 hours, as of July 2025

Number of bales pressed: 24,760 bales, as of July 2025

Main press force 1000 kN

Specific pressing force 120 N/cm²

Pressing force cutting edges free rammer 121 kN

Dimensions of feed chute 970 x 1,800 mm

Theoretical cycle time in idle mode 8.3 seconds

Theoretical throughput capacity 643 m³/hour

Bale dimensions 1,100 x 750 mm, the length is variable 600 up to 2000 mm

Drive power 2 x 45 kW frequency-controlled

Connected load 110 kW

Total current consumption 213 A

Fuse protection 250 A slow-blow

5-fold horizontal tying, fully automatic

Throughput rates with a

bulk density of 20 kg/cbm 12.86 t/hour

Bulk weight of 50 kg/cbm 32.15 t/hour

Bale weights with a bale length of approx. 1.2 m 650 up to 750 kg/bale, depends on material

Hydraulic oil tank capacity 2000 litres

PLC control Siemens S7-300

Siemens TP 700 control panel

Press dimensions assembled 12,130 x 4,800 x 3,270 mm (l x w x h)

Baler HSM, type VK 8818 R-FU, 100 t pressing force, yoc 2015, only 19,750 operating hours, drive 2 x 45 kW (frequency-controlled), with complete conveyor technology

Press dimensions with conveyor system 35,000 x 8,480 x 7,745 mm (l x w x h)

Transport weight baler approx 33 t (Main press approx. 12 t, press channel with bale clamp approx. 10 t)

Special machine equipment:

Access locking by means of key transfer system

Electro-hydraulic locking of the press carriage during the tying process so that the press plunger does not change position with highly expansive materials

Additional optional equipment ordered:

Frequency-controlled main drive, 2 x 45 kW, with up to 40 % energy savings compared to the standard motorisation 2 x 45 kW, with the same power output

Manual switch-off or switch-on of the number of strapping wires to save on strapping wire for non-expansive material

Cutting-edge frei rammer with 121 kN pressing force

Sensory wire monitoring, with press switch-off in the event of wire breakage or wire end

Bale chute

Visual warning signal, mounted on the control cabinet

Condition of the baler:

The entire baling system (baler and conveyor belt) is in good, operational condition and is cleaned, lubricated and maintained by the operator on a weekly basis in accordance with the manufacturer's specifications.

Technical data for the chain belt conveyor:

Manufacturer Stadler Anlagenbau GmbH

Typ chain belt conveyor KF 1800

Year of construction 2015

Belt speed 0,36 m/sec.

Length feeding conveyor 7,000 mm

Length elevating conveyor 14,500 mm

Length goose neck 1,550 mm

Grade 30°

Nominal width 1,800 mm

Effecting width 1,638 mm

Height conveyor over all 7,745 mm

Pit dimensions to conveyor belt 11,200 x 3,000 x 1,250 (l x w x h)

Scope of delivery:

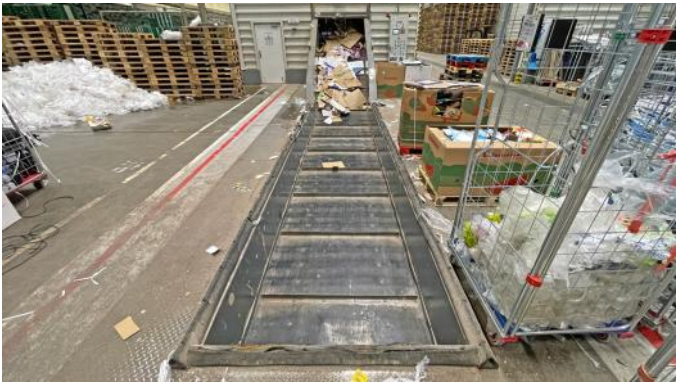
The conveyor belt, the transverse distribution belt and the baling press are for sale, with bale chute but without wire pulling stations and without wire.

Comments:

The documentation (Manual, CE-declaration, electr./hydr.-drawings), are completely available.

Inspections are possible after agreement. We will not assume liability for the given technical data and possible errors.

Baler HSM, type VK 8818 R-FU, 100 t pressing force, yoc 2015, only 19,750 operating hours, drive 2 x 45 kW (frequency-controlled), with complete conveyor technology



Baler HSM, type VK 8818 R-FU, 100 t pressing force, yoc 2015, only 19,750 operating hours, drive 2 x 45 kW (frequency-controlled), with complete conveyor technology



Baler HSM, type VK 8818 R-FU, 100 t pressing force, yoc 2015, only 19,750 operating hours, drive 2 x 45 kW (frequency-controlled), with complete conveyor technology



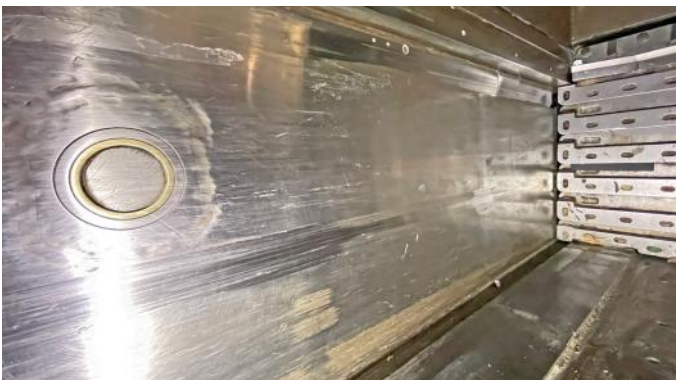
Baler HSM, type VK 8818 R-FU, 100 t pressing force, yoc 2015, only 19,750 operating hours, drive 2 x 45 kW (frequency-controlled), with complete conveyor technology



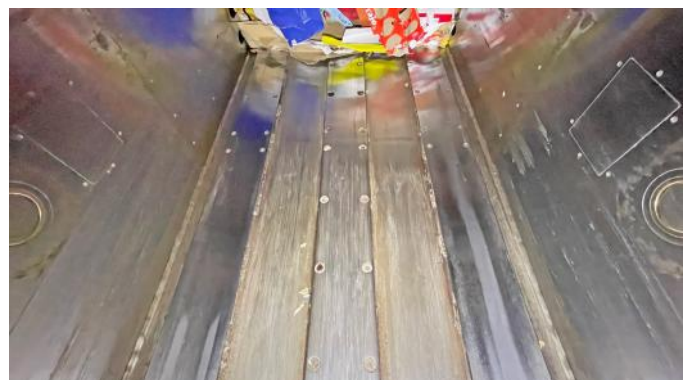
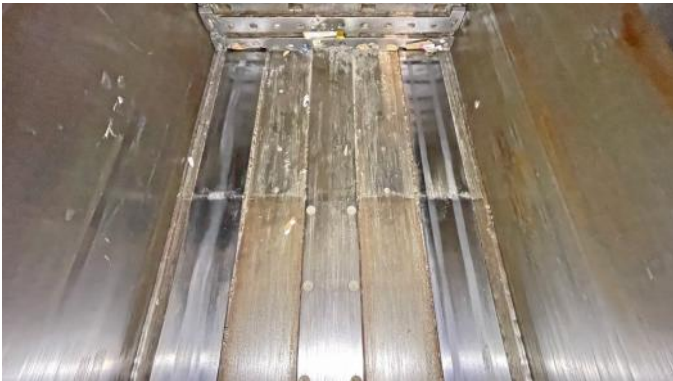
Baler HSM, type VK 8818 R-FU, 100 t pressing force, yoc 2015, only 19,750 operating hours, drive 2 x 45 kW (frequency-controlled), with complete conveyor technology



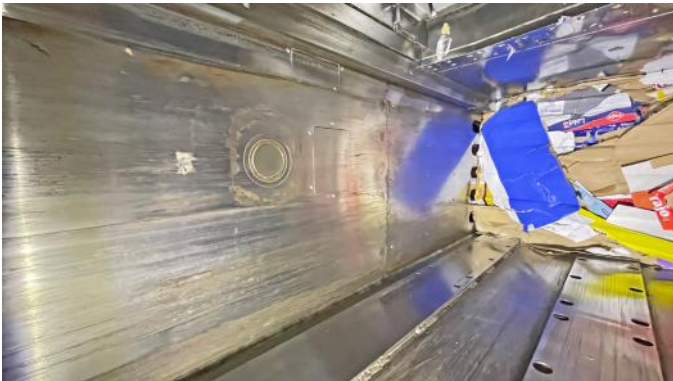
Baler HSM, type VK 8818 R-FU, 100 t pressing force, yoc 2015, only 19,750 operating hours, drive 2 x 45 kW (frequency-controlled), with complete conveyor technology



Baler HSM, type VK 8818 R-FU, 100 t pressing force, yoc 2015, only 19,750 operating hours, drive 2 x 45 kW (frequency-controlled), with complete conveyor technology



Baler HSM, type VK 8818 R-FU, 100 t pressing force, yoc 2015, only 19,750 operating hours, drive 2 x 45 kW (frequency-controlled), with complete conveyor technology



Baler HSM, type VK 8818 R-FU, 100 t pressing force, yoc 2015, only 19,750 operating hours, drive 2 x 45 kW (frequency-controlled), with complete conveyor technology

