

Baler MACPRESSE, type 111A, 170 t pressing force, yoc 1996, drive power 2 x 55 kW, incl. chain belt conveyor and wire drawing stations, baler refurbished



The baler was partially overhauled in our workshop and tested after completion of the work, please look at our functional video. The system was previously used to bale paper and cardboard from municipal collections. The contract was awarded elsewhere after the end of the contract period, so the complete system is for sale.

For sale is a used baling press system consisting of a chain belt conveyor for underfloor operation, with a feed hopper, a hydraulic pre-compactor with whirlulutor, a MACPRESSE 111A baling press, two complete wire drawing frames with 5 wire reel stands each, without wire.

Technical data baler:

Manufacturer MACPRESSE EUROPA S.R.L.

Typ 111A

Year of construction 1996, refurbished in 10/2024

Press power main press 170 tons

Specific press capacity 14 kg/cm²

Feed channel 1,800 x 1,020 mm

Filling volume 2,5 cm³

Theoretic throughput rate 750 m³/h

Bale size 1,100 x 1,100 mm, length variable

Driving motor 2 x 55 kW

Tying system 5-fold horizontal, full automatic

Throughput rate at a approx. 30 up to 35 tons/h, depends on material

Volume hydraulic oil tank 3,000 l

Transport dimensions of press with new machine feet 113,700 x 2,300 x 2,900 mm (l x w x h)

Machine weight baler approx. 40 tons

Comments:

The baler was partially overhauled in our workshop and tested after completion of the work, please look at our functional video. The system was previously used to bale paper and cardboard from municipal collections. The contract was awarded elsewhere after the end of the contract period, so the complete system is for sale.

Baler MACPRESSE, type 111A, 170 t pressing force, yoc 1996, drive power 2 x 55 kW, incl. chain belt conveyor and wire drawing stations, baler refurbished

The overhaul work carried out and the spare parts replaced can be found in the detailed photo documentation and in our quotation.

The documentation (Manual, CE, electr./hydr.-drawings), are completely available. Inspections are possible after agreement. We will not assume liability for the given technical data and possible errors.

Technical data conveyor belt:

Manufacturer Wagensfeld B.V.

Type chain belt conveyor 1700 mm

Year of construction 2017

Drive power 7.5 kW

Belt speed 14 m/minute

Length of infeed conveyor 6,900 mm

Length of ascending belt 12,885 mm

Length of gooseneck 1,747 mm

Overall length 21,271 mm

Pitch 32°

Effective width 1,644 mm

Height of drive shaft above ground 5,777 mm

Wall height of feed conveyor 500 mm

Wall height of ascending conveyor 880 mm

Steel flights height 40 mm

Distance between flights 1200 mm

Transport dimensions conveyor disassembled 15,005 x 2,503 x 2,435 mm (l x w x h)

Pit dimensions 11,500 x 2,700 x 1,015 mm (l x w x d)

Remarks:

The chain belt conveyor, built in 2017, was later made to fit the baler during the last installation of the baler in the Netherlands and is newly installed. The conveyor belt is in good, operational condition and has therefore not been overhauled. An installation drawing with the pit dimensions is available.

Scope of delivery:

1 chain belt conveyor, Wagensveld B.V.

1 piece feed hopper with pre-compressor flaps

1 piece wirbulator

1 baler MACPRESSE, type 111A

2 wire drawing frames with wire reel stands, without wire

1 operating manual with CE declaration, electrical and hydraulic circuit diagram

Baler MACPRESSE, type 111A, 170 t pressing force, yoc 1996, drive power 2 x 55 kW, incl. chain belt conveyor and wire drawing stations, baler refurbished



Baler MACPRESSE, type 111A, 170 t pressing force, yoc 1996, drive power 2 x 55 kW, incl. chain belt conveyor and wire drawing stations, baler refurbished



Baler MACPRESSE, type 111A, 170 t pressing force, yoc 1996, drive power 2 x 55 kW, incl. chain belt conveyor and wire drawing stations, baler refurbished



Baler MACPRESSE, type 111A, 170 t pressing force, yoc 1996, drive power 2 x 55 kW, incl. chain belt conveyor and wire drawing stations, baler refurbished



Baler MACPRESSE, type 111A, 170 t pressing force, yoc 1996, drive power 2 x 55 kW, incl. chain belt conveyor and wire drawing stations, baler refurbished



Baler MACPRESSE, type 111A, 170 t pressing force, yoc 1996, drive power 2 x 55 kW, incl. chain belt conveyor and wire drawing stations, baler refurbished



Baler MACPRESSE, type 111A, 170 t pressing force, yoc 1996, drive power 2 x 55 kW, incl. chain belt conveyor and wire drawing stations, baler refurbished



All bale retaining clamps renewed

All run-in marks on the wire feeders welded shut and smoothed



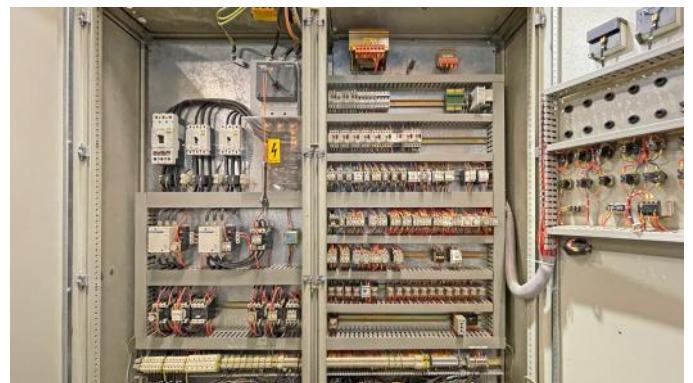
All bale retaining clamps renewed

All run-in marks on the wire feeders welded shut and smoothed

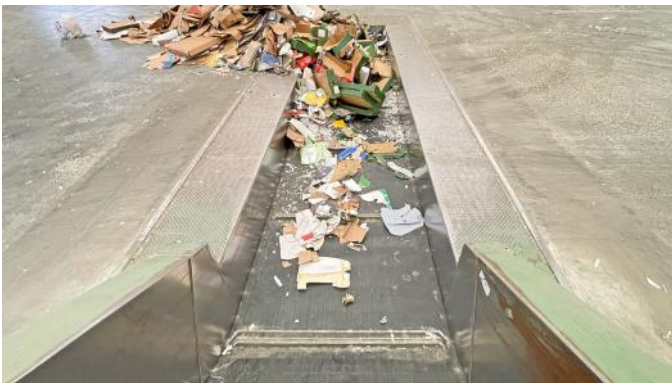
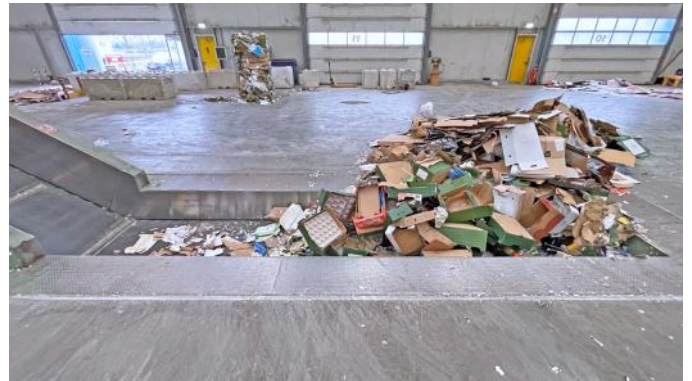
Baler MACPRESSE, type 111A, 170 t pressing force, yoc 1996, drive power 2 x 55 kW, incl. chain belt conveyor and wire drawing stations, baler refurbished



Baler MACPRESSE, type 111A, 170 t pressing force, yoc 1996, drive power 2 x 55 kW, incl. chain belt conveyor and wire drawing stations, baler refurbished



Baler MACPRESSE, type 111A, 170 t pressing force, yoc 1996, drive power 2 x 55 kW, incl. chain belt conveyor and wire drawing stations, baler refurbished



Baler MACPRESSE, type 111A, 170 t pressing force, yoc 1996, drive power 2 x 55 kW, incl. chain belt conveyor and wire drawing stations, baler refurbished



Baler MACPRESSE, type 111A, 170 t pressing force, yoc 1996, drive power 2 x 55 kW, incl. chain belt conveyor and wire drawing stations, baler refurbished

