

**Baler MACPRESSE. type 112, 200 t press force, yoc 2002, 43,459 operating hours, drive power 2 x 75 kW, big size bale, with 5-fold horizontal tying system**



The machine will be overhauled in our workshop at the beginning of 2025. We assume that the overhaul work and the functional test will be completed by the end of February 2025 and that the press will then be ready for use.

**Technical data baler:**

Manufacturer MACPRESSE EUROPA S.R.L.

Typ 112

Year of construction 2002

Operating hours 43,954 hours, stand March

Press power main press 200 tons

Specific press capacity 16,5 kg/cm<sup>2</sup>

Feed channel 2,000 x 1,020 mm

Filling volume 2,65 cm<sup>3</sup>

Theoretic throughput rate 795 m<sup>3</sup>/h

Bale size 1,100 x 1,100 mm, length variable

Driving motor 2 x 75 kW

Tying system 5-fold horizontal, full automatic

Throughput rate at MSW approx. 48 up to 54 tons/h, depends on material

Volume hydraulic oil tank 3,100 l

Machine weight baler approx. 50,8 tons

**Scope of delifery:**

1 piece baler MACPRESSE, type 111A

1 operating manual with CE declaration, electrical and hydraulic circuit diagram

**Comments:**

The machine is currently in our workshop for overhaul. We assume that the press will be completely overhauled in approx. 4 weeks and can then be tested.

The documentation (Manual, CE, electr./hydr.-drawings), are completely available. Inspections are possible after agreement. We will not assume liability for the given technical data and possible

**Baler MACPRESSE. type 112, 200 t press force, yoc 2002, 43,459 operating hours, drive power 2 x 75 kW, big size bale, with 5-fold horizontal tying system**

errors.

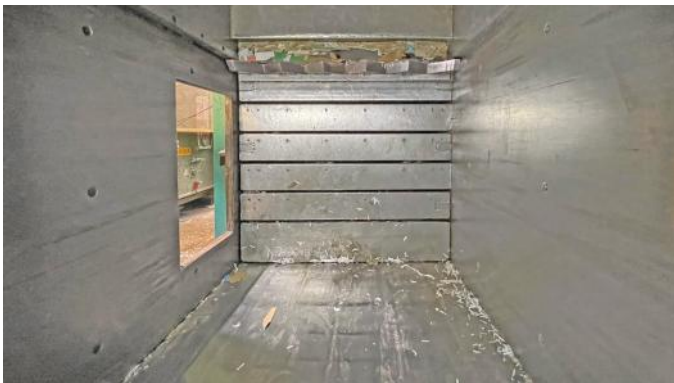


**Baler MACPRESSE. type 112, 200 t press force, yoc 2002, 43,459 operating hours, drive power 2 x 75 kW, big size bale, with 5-fold horizontal tying system**

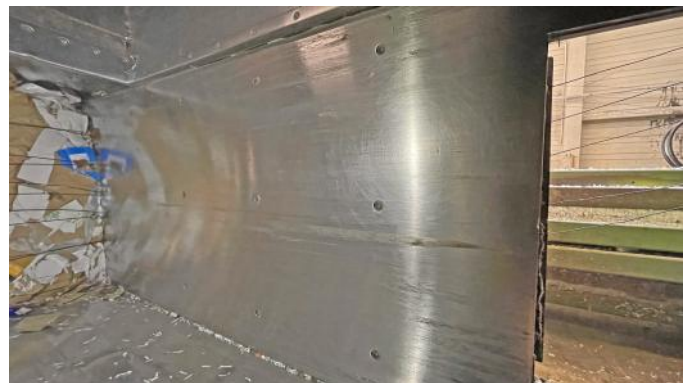




**Baler MACPRESSE. type 112, 200 t press force, yoc 2002, 43,459 operating hours, drive power 2 x 75 kW, big size bale, with 5-fold horizontal tying system**



**Baler MACPRESSE. type 112, 200 t press force, yoc 2002, 43,459 operating hours, drive power 2 x 75 kW, big size bale, with 5-fold horizontal tying system**





**Baler MACPRESSE. type 112, 200 t press force, yoc 2002, 43,459 operating hours, drive power 2 x 75 kW, big size bale, with 5-fold horizontal tying system**





**Baler MACPRESSE. type 112, 200 t press force, yoc 2002, 43,459 operating hours, drive power 2 x 75 kW, big size bale, with 5-fold horizontal tying system**



**Baler MACPRESSE. type 112, 200 t press force, yoc 2002, 43,459 operating hours, drive power 2 x 75 kW, big size bale, with 5-fold horizontal tying system**

