

Baler Presona, type LP 60 VH1, 60 t pressing force, yoc 2015, only 28,748 operating hours, effective pump running time 6,239 hours, drive power 37 kW



The machine is currently in our workshop for overhaul. We assume that the press will be completely overhauled in approx. 4 weeks and can then be tested.

Technical data baler:

Manufacturer Presona AB, Sweden

Type LP 60 VH1

Year of construction 2015

Total operating hours, 28,748 hours, as of November 2024

Effective pump running time 6,239 hours, as of November 2024

Number of pressed bales 110,122 bales, as of November 2024

Press force pre press 25 t

Main press force 60 tonnes

Specific pressing force 73N/cm²

Dimensions of feed chute 1,500 x 1,100 mm

Filling volume / pressing cycle 2.7 m³

Theoretical throughput capacity 800 m³/hour

Throughput capacity under operating conditions 350 m³/hour

Bale dimensions 1,100 x 750 mm

Drive power 37 kW

Tying 5-fold vertical, fully automatic

Throughput capacity with a

Bulk weight of 50 kg/cbm 11 to 14 tonnes/hour

Bale weights 420 to 570 kg, depending on material

Hydraulic oil tank volume 600 litres

Baler dimensions assembled with hopper 10,100 x 3,750 x 4,310 mm (l x w x h)

Transport dimensions excluding press 10,100 x 2,400 x 3,000 mm (l x w x h)

Machine weight press approx. 20 tonnes

Baler Presona, type LP 60 VH1, 60 t pressing force, yoc 2015, only 28,748 operating hours, effective pump running time 6,239 hours, drive power 37 kW

Comments:

The machine is currently in our workshop for overhaul. We assume that the press will be completely overhauled in approx. 4 weeks and can then be tested.

The press is sold without a conveyor belt and without wire stations. Inspections are possible after agreement. We will not assume liability for the given technical data and possible errors.

Baler Presona, type LP 60 VH1, 60 t pressing force, yoc 2015, only 28,748 operating hours, effective pump running time 6,239 hours, drive power 37 kW



Baler Presona, type LP 60 VH1, 60 t pressing force, yoc 2015, only 28,748 operating hours, effective pump running time 6,239 hours, drive power 37 kW



Baler Presona, type LP 60 VH1, 60 t pressing force, yoc 2015, only 28,748 operating hours, effective pump running time 6,239 hours, drive power 37 kW



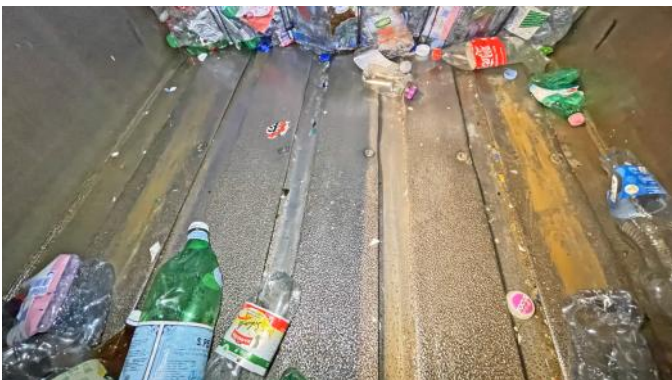
Baler Presona, type LP 60 VH1, 60 t pressing force, yoc 2015, only 28,748 operating hours, effective pump running time 6,239 hours, drive power 37 kW



Baler Presona, type LP 60 VH1, 60 t pressing force, yoc 2015, only 28,748 operating hours, effective pump running time 6,239 hours, drive power 37 kW



Baler Presona, type LP 60 VH1, 60 t pressing force, yoc 2015, only 28,748 operating hours, effective pump running time 6,239 hours, drive power 37 kW



Baler Presona, type LP 60 VH1, 60 t pressing force, yoc 2015, only 28,748 operating hours, effective pump running time 6,239 hours, drive power 37 kW



Baler Presona, type LP 60 VH1, 60 t pressing force, yoc 2015, only 28,748 operating hours, effective pump running time 6,239 hours, drive power 37 kW

