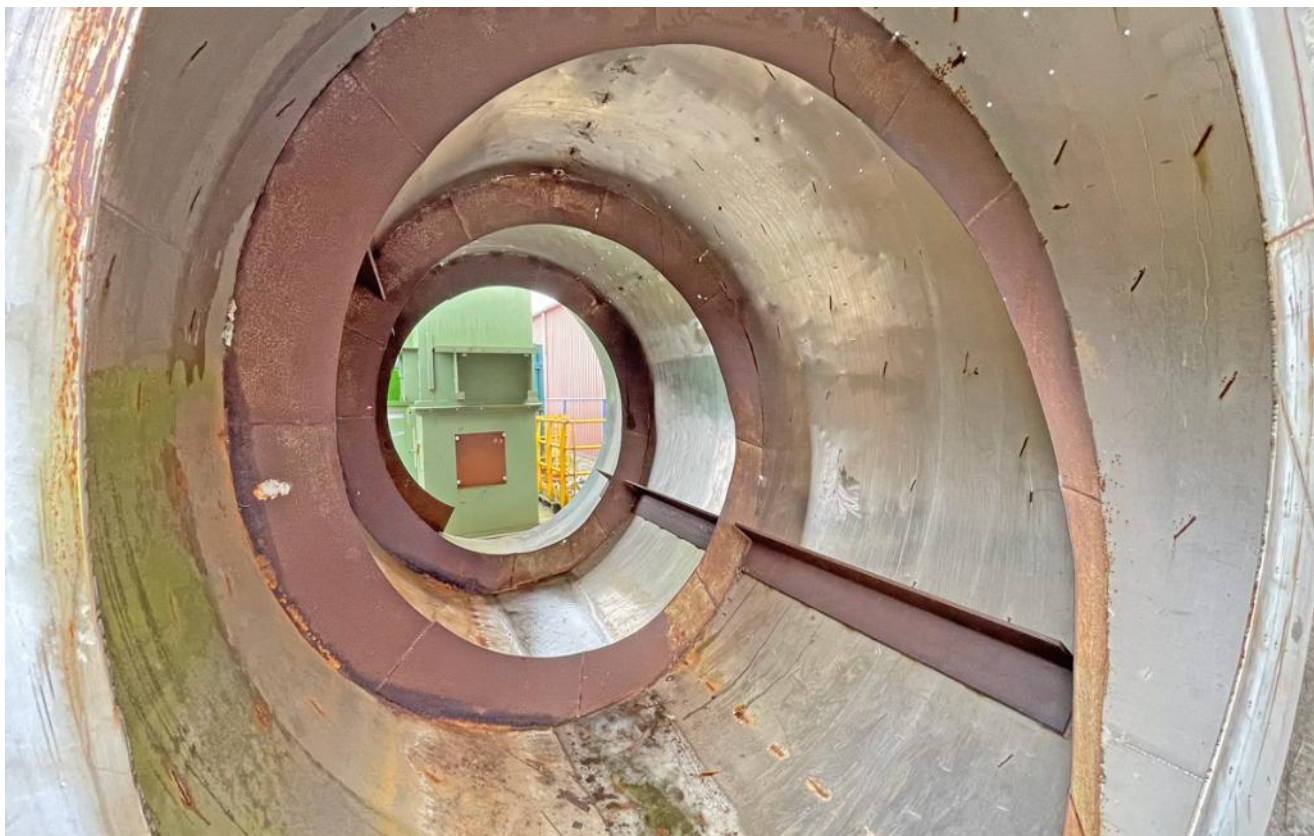


Bale loosening drum 6000 x 3000 mm, for breaking up and loosening materials pressed into bales



This is a 6000 x 3000 mm bale loosening drum for breaking up and loosening materials pressed into bales.

Technical data for the bale loosening drum:

Manufacturer not known
Type of bale loosening drum
Year of manufacture not known
Dimensions of the drum 6000 x 3000 mm (l x d)
Height of the welded-in helix 300 mm
Dimensions of the drum frame 4900 x 3400 x 2200 mm (L x W x H)
Drive power 2 x 4 kW

Functional description:

The bale loosening drum was fed with pressed paper bales from which the binding wire had previously been removed. The pressed and compact bale is broken up and loosened by the baffle plates welded into the drum parallel to the conveying direction. The helix, which is welded in with an incline to the conveying direction, transports the loosened material further to the drum outlet. Here it falls through a hopper onto a conveyor belt for further processing.

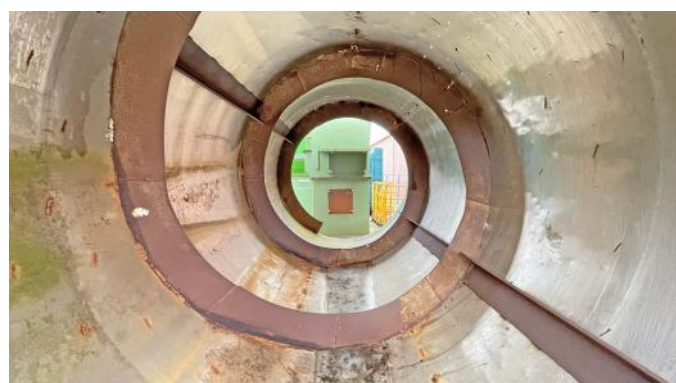
Scope of delivery:

Bale loosening drum
Frame with drive and roller bearings for the bale loosening drum

Comments:

Documentation (operating instructions, CE declaration, electrical/hydrical circuit diagram) is not available and cannot be supplied. Viewing is possible by appointment. We accept no liability for the technical details or any errors.

Bale loosening drum 6000 x 3000 mm, for breaking up and loosening materials pressed into bales



Bale loosening drum 6000 x 3000 mm, for breaking up and loosening materials pressed into bales



Bale loosening drum 6000 x 3000 mm, for breaking up and loosening materials pressed into bales

